

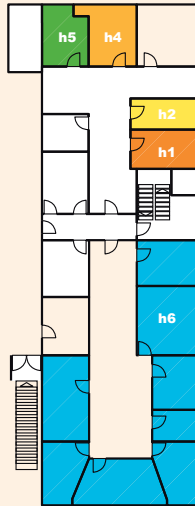
# Floor Plan Advice and Counselling Center

# Site Map

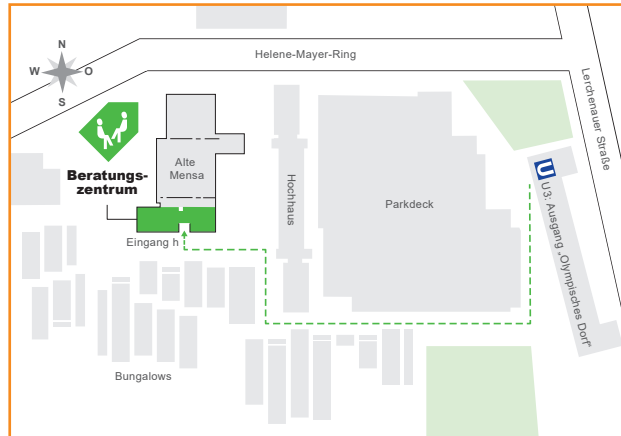
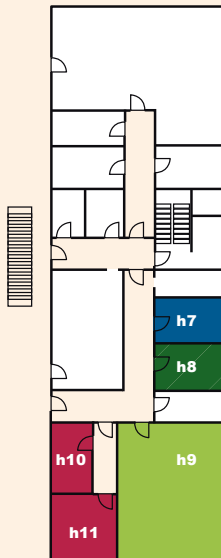


Studentenwerk  
München

## 1st Floor




## 2nd Floor



### Advice and Counselling Center in the "Olympisches Dorf"

All consultation offered by the Student Union in Munich can be accessed through the advice and counselling center:

Alte Mensa  
Helene-Mayer-Ring 9  
Entrance h, 1st and 2nd floor  
80809 Munich  
 U3 Olympiazentrum

Munich Student Union

# The Advice and Counselling Network



# Our Advisory Network

Advice and Counselling Center in Munich  
Olympisches Dorf, Alte Mensa

**General Advice and  
and Social Counselling**

as well as

**Advice for Students  
with a Disability and /  
or Chronic Diseases**

**Scholarship  
Counselling**

**General BAföG-Advice**

**Student Loan Advice**

**Advice for Students  
Expecting or  
With a Child**

**Legal Advice**

**Psychotherapeutic  
and Psychosocial  
Counselling**

as well as

**Advice Service  
“Sexual Abuse,  
Discrimination and  
Violence”**

**Study Coaching**

**Mobile Counselling  
Courses offered by  
the Advisory Network**

as well as

**Talks and  
Information Events**

Advice and  
Counselling Centre  
in Rosenheim

**General Advice and  
Social Counselling**

as well as

**BAföG Information**

**BAföG Service-Desk**

**Psychosocial  
Counselling**

Advice and  
Counselling  
Center in Freising,  
Weißenstephan  
Campus

**General Advice and  
Social Counselling**

as well as

**BAföG Information**

**Legal Advice**

**Psychotherapeutic  
and Psychosocial  
Counselling**

Up-to-date contact details and opening  
hours can be found on our website at:

[www.studentenwerk-muenchen.de/  
en/our-advisory-network](http://www.studentenwerk-muenchen.de/en/our-advisory-network)

